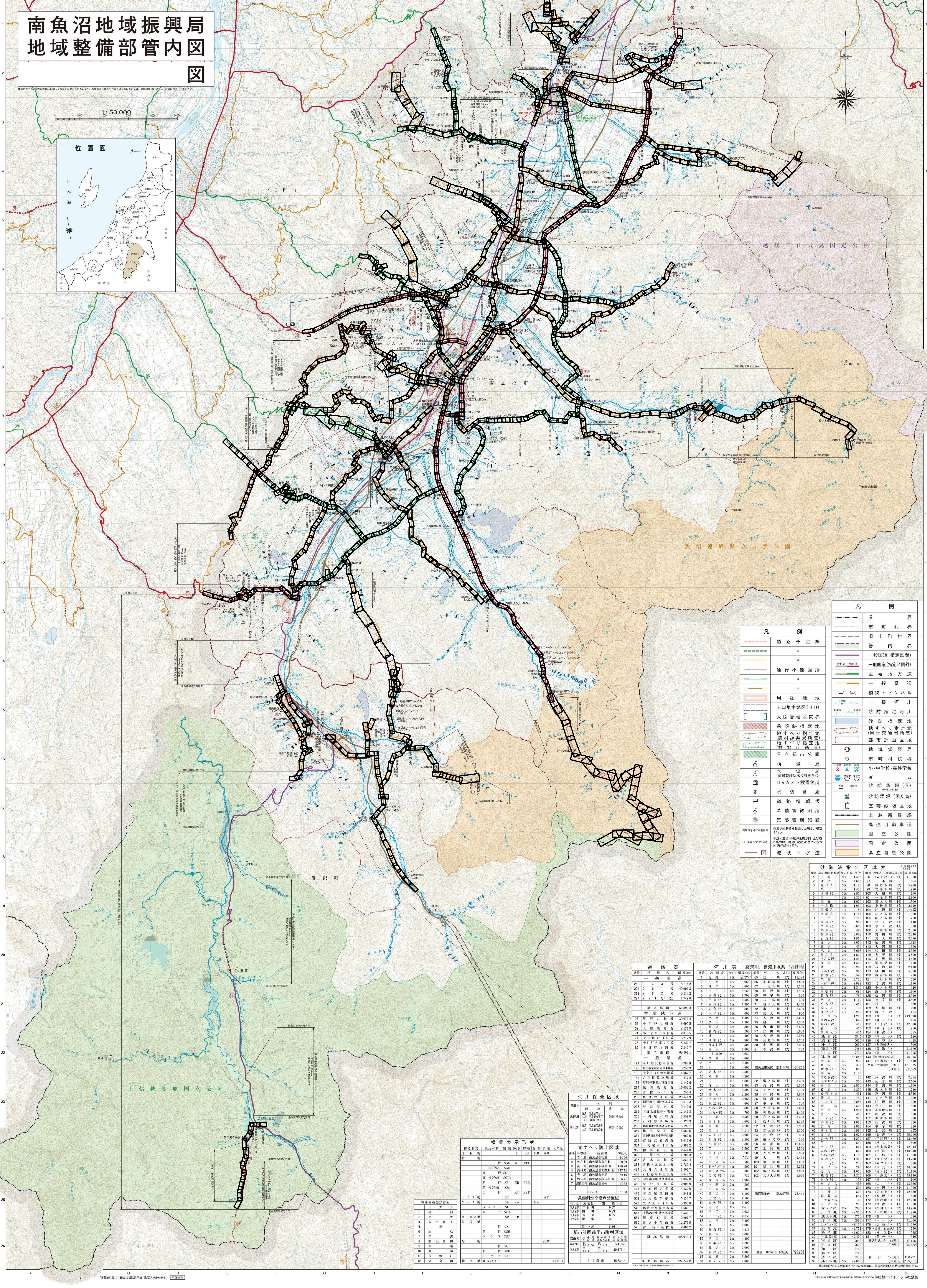
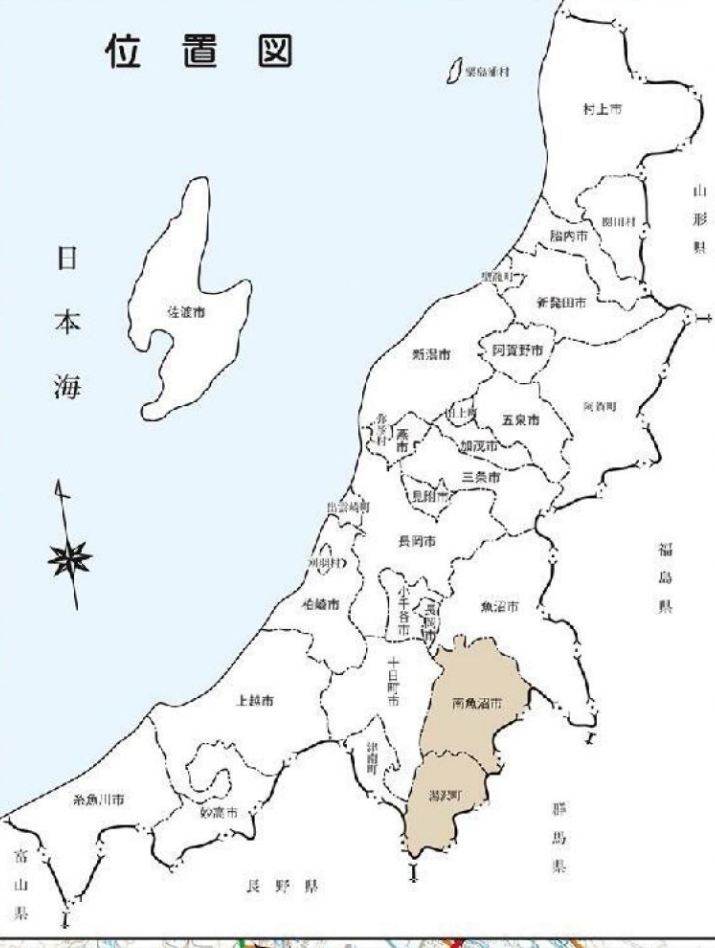


南魚沼地域振興局 地域整備部管内図

図

1:50,000



凡例

| | |
|-----|------------------|
| --- | 界 |
| --- | 市町村界 |
| --- | 旧市町村界 |
| --- | 管内界 |
| --- | 一般国道(指定区間) |
| --- | 一般国道(指定区間外) |
| --- | 主要地方道 |
| --- | 一般県道 |
| --- | 橋梁・トンネル |
| --- | 一般河川 |
| --- | 砂防指定河川 |
| --- | 砂防指定地 |
| --- | 地すべり指定地(農林振興局所管) |
| --- | 地すべり指定地(林野庁所管) |
| --- | 都市計画区域 |
| --- | 地域振興局 |
| ○ | 市町村役場 |
| ○ | 小・中学校・高等学校 |
| △ | ダム |
| △ | 砂防堰堤(県) |
| △ | 砂防堰堤(国交省) |
| △ | 直轄砂防区域 |
| △ | 上越新幹線 |
| △ | 高速自動車道 |
| △ | 国立公園 |
| △ | 国立自然公園 |

砂防指定区域表

| 河川 | 指定区間 | 延長(メートル) |
|-----|------|----------|
| 1 | 1 | 1,451 |
| 2 | 2 | 1,450 |
| 3 | 3 | 1,450 |
| 4 | 4 | 1,450 |
| 5 | 5 | 1,450 |
| 6 | 6 | 1,450 |
| 7 | 7 | 1,450 |
| 8 | 8 | 1,450 |
| 9 | 9 | 1,450 |
| 10 | 10 | 1,450 |
| 11 | 11 | 1,450 |
| 12 | 12 | 1,450 |
| 13 | 13 | 1,450 |
| 14 | 14 | 1,450 |
| 15 | 15 | 1,450 |
| 16 | 16 | 1,450 |
| 17 | 17 | 1,450 |
| 18 | 18 | 1,450 |
| 19 | 19 | 1,450 |
| 20 | 20 | 1,450 |
| 21 | 21 | 1,450 |
| 22 | 22 | 1,450 |
| 23 | 23 | 1,450 |
| 24 | 24 | 1,450 |
| 25 | 25 | 1,450 |
| 26 | 26 | 1,450 |
| 27 | 27 | 1,450 |
| 28 | 28 | 1,450 |
| 29 | 29 | 1,450 |
| 30 | 30 | 1,450 |
| 31 | 31 | 1,450 |
| 32 | 32 | 1,450 |
| 33 | 33 | 1,450 |
| 34 | 34 | 1,450 |
| 35 | 35 | 1,450 |
| 36 | 36 | 1,450 |
| 37 | 37 | 1,450 |
| 38 | 38 | 1,450 |
| 39 | 39 | 1,450 |
| 40 | 40 | 1,450 |
| 41 | 41 | 1,450 |
| 42 | 42 | 1,450 |
| 43 | 43 | 1,450 |
| 44 | 44 | 1,450 |
| 45 | 45 | 1,450 |
| 46 | 46 | 1,450 |
| 47 | 47 | 1,450 |
| 48 | 48 | 1,450 |
| 49 | 49 | 1,450 |
| 50 | 50 | 1,450 |
| 51 | 51 | 1,450 |
| 52 | 52 | 1,450 |
| 53 | 53 | 1,450 |
| 54 | 54 | 1,450 |
| 55 | 55 | 1,450 |
| 56 | 56 | 1,450 |
| 57 | 57 | 1,450 |
| 58 | 58 | 1,450 |
| 59 | 59 | 1,450 |
| 60 | 60 | 1,450 |
| 61 | 61 | 1,450 |
| 62 | 62 | 1,450 |
| 63 | 63 | 1,450 |
| 64 | 64 | 1,450 |
| 65 | 65 | 1,450 |
| 66 | 66 | 1,450 |
| 67 | 67 | 1,450 |
| 68 | 68 | 1,450 |
| 69 | 69 | 1,450 |
| 70 | 70 | 1,450 |
| 71 | 71 | 1,450 |
| 72 | 72 | 1,450 |
| 73 | 73 | 1,450 |
| 74 | 74 | 1,450 |
| 75 | 75 | 1,450 |
| 76 | 76 | 1,450 |
| 77 | 77 | 1,450 |
| 78 | 78 | 1,450 |
| 79 | 79 | 1,450 |
| 80 | 80 | 1,450 |
| 81 | 81 | 1,450 |
| 82 | 82 | 1,450 |
| 83 | 83 | 1,450 |
| 84 | 84 | 1,450 |
| 85 | 85 | 1,450 |
| 86 | 86 | 1,450 |
| 87 | 87 | 1,450 |
| 88 | 88 | 1,450 |
| 89 | 89 | 1,450 |
| 90 | 90 | 1,450 |
| 91 | 91 | 1,450 |
| 92 | 92 | 1,450 |
| 93 | 93 | 1,450 |
| 94 | 94 | 1,450 |
| 95 | 95 | 1,450 |
| 96 | 96 | 1,450 |
| 97 | 97 | 1,450 |
| 98 | 98 | 1,450 |
| 99 | 99 | 1,450 |
| 100 | 100 | 1,450 |

河川表

| 河川 | 延長(メートル) |
|-----|----------|
| 1 | 1,451 |
| 2 | 1,450 |
| 3 | 1,450 |
| 4 | 1,450 |
| 5 | 1,450 |
| 6 | 1,450 |
| 7 | 1,450 |
| 8 | 1,450 |
| 9 | 1,450 |
| 10 | 1,450 |
| 11 | 1,450 |
| 12 | 1,450 |
| 13 | 1,450 |
| 14 | 1,450 |
| 15 | 1,450 |
| 16 | 1,450 |
| 17 | 1,450 |
| 18 | 1,450 |
| 19 | 1,450 |
| 20 | 1,450 |
| 21 | 1,450 |
| 22 | 1,450 |
| 23 | 1,450 |
| 24 | 1,450 |
| 25 | 1,450 |
| 26 | 1,450 |
| 27 | 1,450 |
| 28 | 1,450 |
| 29 | 1,450 |
| 30 | 1,450 |
| 31 | 1,450 |
| 32 | 1,450 |
| 33 | 1,450 |
| 34 | 1,450 |
| 35 | 1,450 |
| 36 | 1,450 |
| 37 | 1,450 |
| 38 | 1,450 |
| 39 | 1,450 |
| 40 | 1,450 |
| 41 | 1,450 |
| 42 | 1,450 |
| 43 | 1,450 |
| 44 | 1,450 |
| 45 | 1,450 |
| 46 | 1,450 |
| 47 | 1,450 |
| 48 | 1,450 |
| 49 | 1,450 |
| 50 | 1,450 |
| 51 | 1,450 |
| 52 | 1,450 |
| 53 | 1,450 |
| 54 | 1,450 |
| 55 | 1,450 |
| 56 | 1,450 |
| 57 | 1,450 |
| 58 | 1,450 |
| 59 | 1,450 |
| 60 | 1,450 |
| 61 | 1,450 |
| 62 | 1,450 |
| 63 | 1,450 |
| 64 | 1,450 |
| 65 | 1,450 |
| 66 | 1,450 |
| 67 | 1,450 |
| 68 | 1,450 |
| 69 | 1,450 |
| 70 | 1,450 |
| 71 | 1,450 |
| 72 | 1,450 |
| 73 | 1,450 |
| 74 | 1,450 |
| 75 | 1,450 |
| 76 | 1,450 |
| 77 | 1,450 |
| 78 | 1,450 |
| 79 | 1,450 |
| 80 | 1,450 |
| 81 | 1,450 |
| 82 | 1,450 |
| 83 | 1,450 |
| 84 | 1,450 |
| 85 | 1,450 |
| 86 | 1,450 |
| 87 | 1,450 |
| 88 | 1,450 |
| 89 | 1,450 |
| 90 | 1,450 |
| 91 | 1,450 |
| 92 | 1,450 |
| 93 | 1,450 |
| 94 | 1,450 |
| 95 | 1,450 |
| 96 | 1,450 |
| 97 | 1,450 |
| 98 | 1,450 |
| 99 | 1,450 |
| 100 | 1,450 |

道路表

| 道路 | 延長(メートル) |
|-----|----------|
| 1 | 1,451 |
| 2 | 1,450 |
| 3 | 1,450 |
| 4 | 1,450 |
| 5 | 1,450 |
| 6 | 1,450 |
| 7 | 1,450 |
| 8 | 1,450 |
| 9 | 1,450 |
| 10 | 1,450 |
| 11 | 1,450 |
| 12 | 1,450 |
| 13 | 1,450 |
| 14 | 1,450 |
| 15 | 1,450 |
| 16 | 1,450 |
| 17 | 1,450 |
| 18 | 1,450 |
| 19 | 1,450 |
| 20 | 1,450 |
| 21 | 1,450 |
| 22 | 1,450 |
| 23 | 1,450 |
| 24 | 1,450 |
| 25 | 1,450 |
| 26 | 1,450 |
| 27 | 1,450 |
| 28 | 1,450 |
| 29 | 1,450 |
| 30 | 1,450 |
| 31 | 1,450 |
| 32 | 1,450 |
| 33 | 1,450 |
| 34 | 1,450 |
| 35 | 1,450 |
| 36 | 1,450 |
| 37 | 1,450 |
| 38 | 1,450 |
| 39 | 1,450 |
| 40 | 1,450 |
| 41 | 1,450 |
| 42 | 1,450 |
| 43 | 1,450 |
| 44 | 1,450 |
| 45 | 1,450 |
| 46 | 1,450 |
| 47 | 1,450 |
| 48 | 1,450 |
| 49 | 1,450 |
| 50 | 1,450 |
| 51 | 1,450 |
| 52 | 1,450 |
| 53 | 1,450 |
| 54 | 1,450 |
| 55 | 1,450 |
| 56 | 1,450 |
| 57 | 1,450 |
| 58 | 1,450 |
| 59 | 1,450 |
| 60 | 1,450 |
| 61 | 1,450 |
| 62 | 1,450 |
| 63 | 1,450 |
| 64 | 1,450 |
| 65 | 1,450 |
| 66 | 1,450 |
| 67 | 1,450 |
| 68 | 1,450 |
| 69 | 1,450 |
| 70 | 1,450 |
| 71 | 1,450 |
| 72 | 1,450 |
| 73 | 1,450 |
| 74 | 1,450 |
| 75 | 1,450 |
| 76 | 1,450 |
| 77 | 1,450 |
| 78 | 1,450 |
| 79 | 1,450 |
| 80 | 1,450 |
| 81 | 1,450 |
| 82 | 1,450 |
| 83 | 1,450 |
| 84 | 1,450 |
| 85 | 1,450 |
| 86 | 1,450 |
| 87 | 1,450 |
| 88 | 1,450 |
| 89 | 1,450 |
| 90 | 1,450 |
| 91 | 1,450 |
| 92 | 1,450 |
| 93 | 1,450 |
| 94 | 1,450 |
| 95 | 1,450 |
| 96 | 1,450 |
| 97 | 1,450 |
| 98 | 1,450 |
| 99 | 1,450 |
| 100 | 1,450 |

橋梁表示形式

| 橋名 | 形式 |
|-----|----|
| 1 | RC |
| 2 | RC |
| 3 | RC |
| 4 | RC |
| 5 | RC |
| 6 | RC |
| 7 | RC |
| 8 | RC |
| 9 | RC |
| 10 | RC |
| 11 | RC |
| 12 | RC |
| 13 | RC |
| 14 | RC |
| 15 | RC |
| 16 | RC |
| 17 | RC |
| 18 | RC |
| 19 | RC |
| 20 | RC |
| 21 | RC |
| 22 | RC |
| 23 | RC |
| 24 | RC |
| 25 | RC |
| 26 | RC |
| 27 | RC |
| 28 | RC |
| 29 | RC |
| 30 | RC |
| 31 | RC |
| 32 | RC |
| 33 | RC |
| 34 | RC |
| 35 | RC |
| 36 | RC |
| 37 | RC |
| 38 | RC |
| 39 | RC |
| 40 | RC |
| 41 | RC |
| 42 | RC |
| 43 | RC |
| 44 | RC |
| 45 | RC |
| 46 | RC |
| 47 | RC |
| 48 | RC |
| 49 | RC |
| 50 | RC |
| 51 | RC |
| 52 | RC |
| 53 | RC |
| 54 | RC |
| 55 | RC |
| 56 | RC |
| 57 | RC |
| 58 | RC |
| 59 | RC |
| 60 | RC |
| 61 | RC |
| 62 | RC |
| 63 | RC |
| 64 | RC |
| 65 | RC |
| 66 | RC |
| 67 | RC |
| 68 | RC |
| 69 | RC |
| 70 | RC |
| 71 | RC |
| 72 | RC |
| 73 | RC |
| 74 | RC |
| 75 | RC |
| 76 | RC |
| 77 | RC |
| 78 | RC |
| 79 | RC |
| 80 | RC |
| 81 | RC |
| 82 | RC |
| 83 | RC |
| 84 | RC |
| 85 | RC |
| 86 | RC |
| 87 | RC |
| 88 | RC |
| 89 | RC |
| 90 | RC |
| 91 | RC |
| 92 | RC |
| 93 | RC |
| 94 | RC |
| 95 | RC |
| 96 | RC |
| 97 | RC |
| 98 | RC |
| 99 | RC |
| 100 | RC |

地すべり防止区域

| 区域 | 延長(メートル) |
|----|----------|
| 1 | 1,451 |
| 2 | 1,450 |
| 3 | 1,450 |
| 4 | 1,450 |
| 5 | 1,450 |
| 6 | 1,450 |
| 7 | 1,450 |
| 8 | 1,450 |
| 9 | 1,450 |
| 10 | 1,450 |
| 11 | 1,450 |
| 12 | 1,450 |
| 13 | 1,450 |
| 14 | 1,450 |
| 15 | 1,450 |
| 16 | 1,450 |
| 17 | 1,450 |
| 18 | 1,450 |
| 19 | 1,450 |
| 20 | 1,450 |
| 21 | 1,450 |
| 22 | 1,450 |
| 23 | 1,450 |
| 24 | 1,450 |
| 25 | 1,450 |
| 26 | 1,450 |
| 27 | 1,450 |
| 28 | 1,450 |
| 29 | 1,450 |
| 30 | 1,450 |
| 31 | 1,450 |
| 32 | 1,450 |
| 33 | 1,450 |
| 34 | 1,450 |
| 35 | 1,450 |
| 36 | 1,450 |
| 37 | 1,450 |
| 38 | 1,450 |
| 39 | 1,450 |
| 40 | 1,450 |
| 41 | 1,450 |
| 42 | 1,450 |
| 43 | 1,450 |
| 44 | 1,450 |
| 45 | 1,450 |
| 46 | 1,450 |
| 47 | 1,450 |
| 48 | 1,450 |
| 49 | 1,450 |
| 50 | 1,450 |
| 51 | 1,450 |
| 52 | 1,450 |
| 53 | 1,450 |
| 54 | 1,450 |
| 55 | 1,450 |
| 56 | 1,450 |
| 57 | 1,450 |
| 58 | 1,450 |
| 59 | 1,450 |
| 60 | 1,450 |
| 61 | 1,450 |
| 62 | 1,450 |
| 63 | 1,450 |
| 64 | 1,450 |
| 65 | 1,450 |
| 66 | 1,450 |
| 67 | 1,450 |
| 68 | 1,450 |
| 69 | 1,450 |
| 70 | 1,450 |
| 71 | 1,450 |
| 72 | 1,450 |
| 73 | 1,450 |
| 74 | 1,450 |
| 75 | 1,450 |
| 76 | 1,450 |
| 77 | 1,450 |
| 78 | 1,450 |
| 79 | 1,450 |
| 80 | 1,450 |
| 81 | 1,450 |
| 82 | 1,450 |
| 83 | 1,450 |
| 84 | 1,450 |
| 85 | 1,450 |
| 86 | 1,450 |
| 87 | 1,450 |
| 88 | 1,450 |
| 89 | 1,450 |
| 90 | 1,450 |
| 91 | 1,450 |
| 92 | 1,450 |
| 93 | 1 |